

Recombinant Human CD3E & CD3D protein, hFc-tagged

Cat. No. CD3E & CD3D-109H **Lot. No.** (See product label)

SPECIFICATION

Product Overview	Human CD3 epsilon & CD3 delta Heterodimer Protein is expressed from mammalian with a Fc at the Cterminal. It contains Asp 23 - Asp 126 (CD3E) & Phe22-Ala105 (CD3D).
Species	Human
Source	HEK293
ProteinLength	It contains Asp 23 - Asp 126 (CD3E) & Phe22-Ala105 (CD3D).
Description	T-cell surface glycoprotein CD3 epsilon & CD3 delta chain, also known as CD3E & CD3D , are single-pass type I membrane proteins. When antigen presenting cells (APCs) activate T-cell receptor (TCR), TCR-mediated signals are transmitted across the cell membrane by the CD3 chains CD3D, CD3E, CD3G and CD3Z. All CD3 chains contain immunoreceptor tyrosine-based activation motifs (ITAMs) in their cytoplasmic domain.
Form	Supplied as 0.22um filtered solution in PBS (pH 7.4).
Molecular Mass	The protein has a calculated MW of 37.8 kDa (CD3E) and 35.4 kDa (CD3D). As a result of glycosylation, the protein migrates to 40-50 kDa based on Bis-Tris PAGE result.
Endotoxin	Less than 0.01EU per ug by the LAL method.

 Tel: 1-631-559-9269 1-516-512-3133

 Email: info@creative-biomart.com  Fax: 1-631-938-8127

 45-1 Ramsey Road, Shirley, NY 11967, USA

Purity	> 95% as determined by Bis-Tris PAGE
Storage	The product should be stored at -70°C. Please do not repeated freeze-thaw cycles.
Reconstitution	It is recommended that sterile water be added to the vial to prepare a stock solution of 0.2 ug/ul. Centrifuge the vial at 4°C before opening to recover the entire contents.

GENE INFORMATION

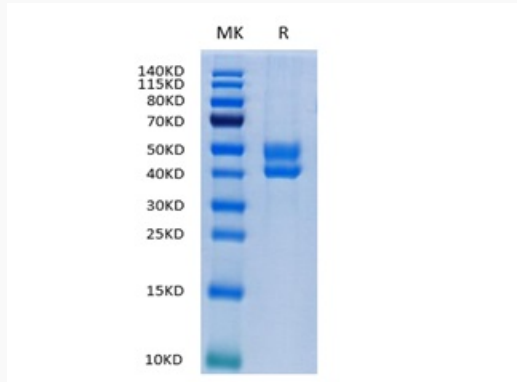
Gene Name	CD3E CD3e molecule, epsilon (CD3-TCR complex) [Homo sapiens]
Official Symbol	CD3E ; CD3D
Synonyms	CD3;CD3D;CD3-DELTA;T3D;CD3E
Gene ID	916
mRNA Refseq	NM_000733
Protein Refseq	NP_000724
UniProt ID	P07766

 Tel: 1-631-559-9269 1-516-512-3133

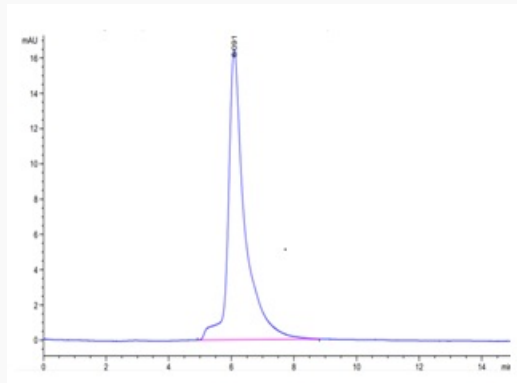
 Email: info@creative-biomart.com  Fax: 1-631-938-8127

 45-1 Ramsey Road, Shirley, NY 11967, USA

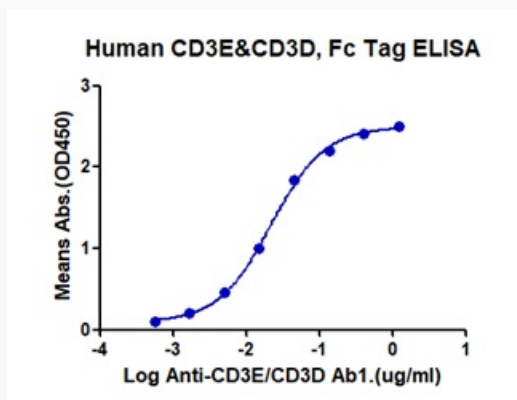
Tris-Bis PAGE



HPLC data



ELISA data

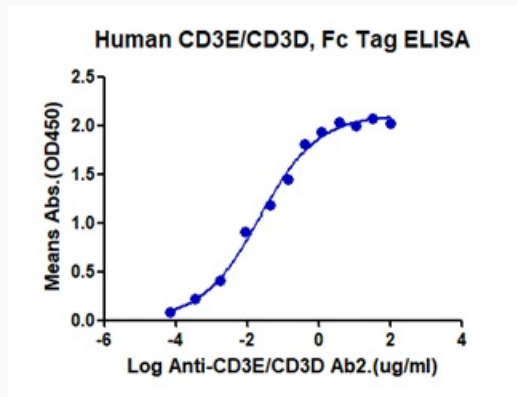


Tel: 1-631-559-9269 1-516-512-3133

Email: info@creative-biomart.com Fax: 1-631-938-8127

45-1 Ramsey Road, Shirley, NY 11967, USA

ELISA data



 Tel: 1-631-559-9269 1-516-512-3133

 Email: info@creative-biomart.com  Fax: 1-631-938-8127

 45-1 Ramsey Road, Shirley, NY 11967, USA